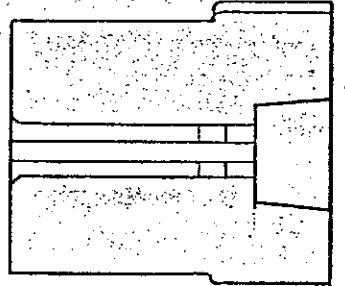
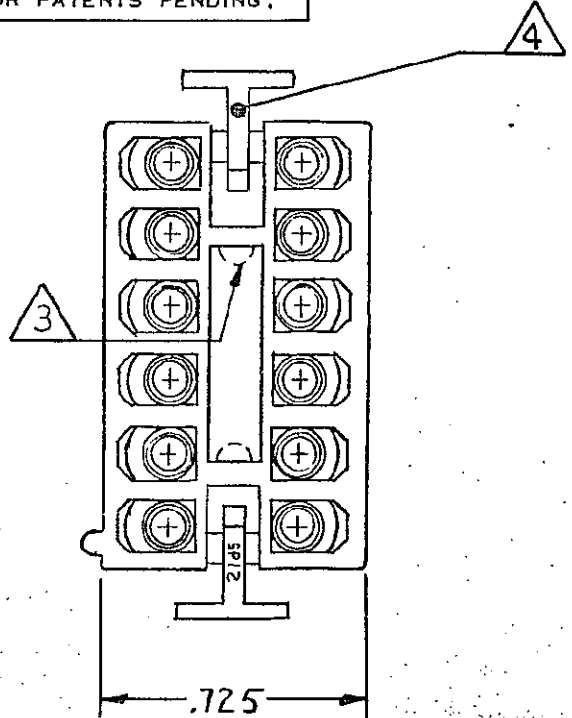
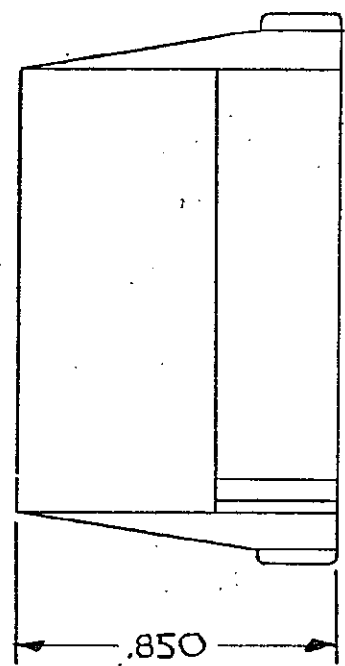
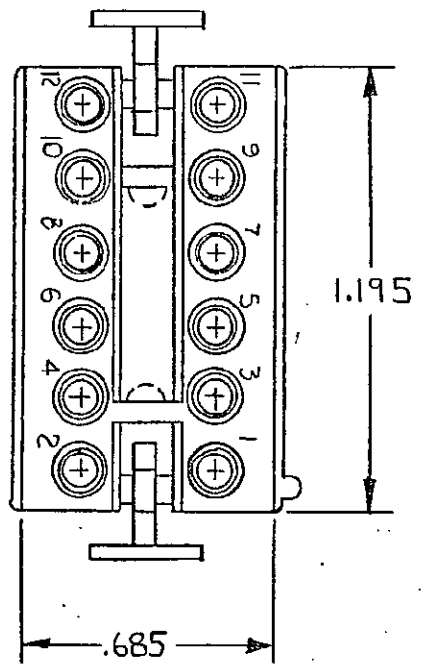


THIS DRAWING IS UNPUBLISHED. RELEASED FOR PUBLICATION JULY 23, 1981

© COPYRIGHT 1964 BY AMP INCORPORATED, HARRISBURG, PA. ALL INTERNATIONAL RIGHTS RESERVED. AMP PRODUCTS MAY BE COVERED BY U.S. AND FOREIGN PATENTS AND/OR PATENTS PENDING.

| | | REVISIONS | | | | |
|---|---|-----------|-----|----------------------------|---------|----------|
| P | F | ZONE | LTR | DESCRIPTION | DATE | APPROVED |
| ✓ | ✓ | | P | REDRAWN W/O CHG. M-7019 | 7-1-82 | CH |
| ✓ | | | PI | RESTORATION | 5-9-85 | RS/S |
| ✓ | | | R | OBSOLETE 1-1, 1-3/1-8, 2-0 | 7/9/86 | RS |
| | | | | 3-0 (SH 2) PER CM-473 | | |
| ✓ | | | S | OBSOLETE 1-9 PER CM-895 | 6-17-87 | PLC TB |
| ✓ | | | T | REVISE PER CM-1440 | 1-7-88 | PLC RS |
| | | | U | OBS-12 PER EC 0730-0129-96 | 6-25-97 | JH RS |



- 1. MATES WITH HOUSING 480288.
- 2. SEE SHEET 2 FOR INK STAMPED HOUSINGS.
- 3 THIS NON-FUNCTIONAL FEATURE MAY OR MAY NOT APPEAR AT AMP'S DISCRETION.
- 4 AMP LOGO ON THIS SURFACE

| | |
|---------|------------|
| | |
| | |
| | |
| | |
| | |
| | |
| NATURAL | 1-480287-0 |
| COLOR | PART NO |

| | | | | |
|---|-------------|--------------------------|-------------------------------------|---|
| UNLESS OTHERWISE SPECIFIED DIMENSIONS ARE IN INCHES. TOLERANCES ON: DECIMALS ±.015 ANGLES ± | CONTRACT NO | | AMP INCORPORATED Harrisburg, Pa. | |
| | DR | <i>m. Feber 7-23-81</i> | | |
| | CHK | <i>D.S. Heide 7/1/82</i> | NAME | PLUG, MOTOR MOUNT, COMMERCIAL MATE-N-LOK, 12 CIRCUIT |
| | APPD | <i>...</i> | APPD | |
| MATERIAL | NYLON 94V-2 | DSGN APPD | SIZE | B |
| COLOR | SEE TABLE | OTHER APPD | FSCM NO | 00779 |
| | | | DRAWING NO | 480287 |
| | | | SCALE | 2-1 |
| | | | | SHEET 1 OF 1 |